



Deer Prairie Creek Preserve

Visit Sarasota County: <https://www.visitsarasota.com/beaches-parks/deer-prairie-creek-preserve>

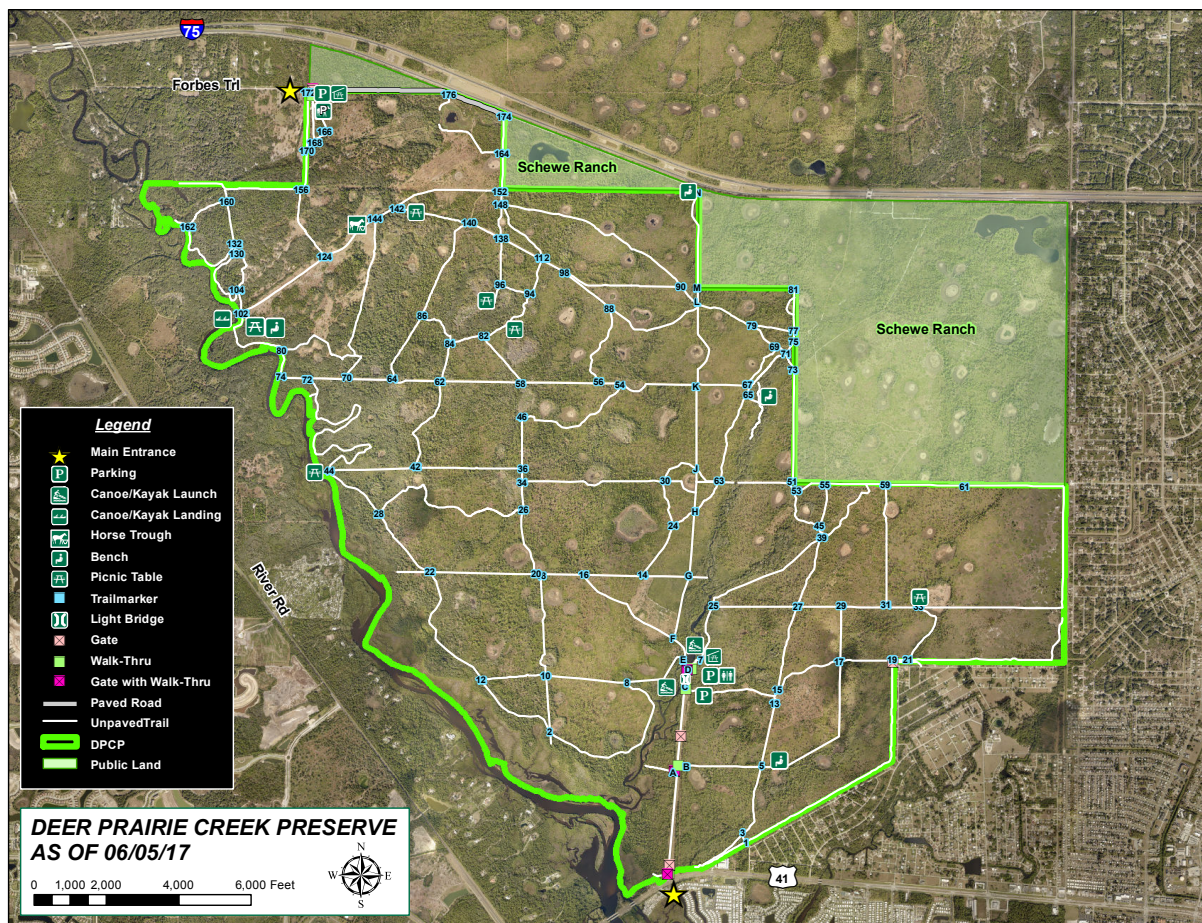
Deer Creek Preserve map: <https://www.scgov.net/Home/ShowDocument?id=30326>

Southwest Florida Water Management District website: <https://www.swfwmd.state.fl.us/recreation/myakka-river-deer-prairie-creek>

Virtual Visit on YouTube: <https://www.swfwmd.state.fl.us/recreation/myakka-river-deer-prairie-creek>

Deer Prairie Creek Preserve was jointly acquired by the District and Sarasota County and lies between I-75 and US 41. The Schewe Tract, which lies both north and south of I-75, is managed by the District. The property was acquired to protect the floodplain of the river and the water quality of the water sources within the region.

The dominant natural communities are pine flatwoods, mixed hardwood and pine, and wetland hardwoods. A portion of the tract was utilized for cattle grazing and is being restored to a more natural condition through the reintroduction of fire on a periodic



basis. Reintroduction of fire will stimulate the growth of the flatwoods species that require fire as part of their life cycle.