

Sample List of Natural Communities



Mammals

Birds

**Frogs
& Toads**

**Trees
& Shrubs**

Butterflies

Wildflowers

Reptiles

Insects

**Natural
Communities**

The Southwest Florida Water Management District (District) manages the water resources for west-central Florida as directed by state law. The goal of the District is to meet the needs of current and future water users while protecting and preserving the water resources within its boundaries.

Through its efforts to protect water resources, the District buys and manages land. As a result, plants and animals that live on these lands are also protected and the public can enjoy recreational and educational activities in the great outdoors.

Every year approximately 2.5 million people visit the more than 325,000 acres of public conservation lands acquired by the District and its partners to protect the region's water resources. The District provides opportunities for these recreational activities to highlight the uniqueness of conservation lands while protecting the natural resources that make them such great places to visit. The lands are open to the public for activities such as hiking, bicycling, hunting, horseback riding, fishing, camping, nature study and picnicking. Many District lands also have facilities that are universally accessible for the mobility-impaired. Each of the areas owned by the District offers something special. Learning as much as possible about what is special before you visit a park/management area allows you to gain an appreciation for what you are likely to experience. These species guides highlight common habitats, plants and animals found on District conservation lands.

For additional information on District lands, order or download our *Recreation Guide to Southwest Florida Water Management District Lands* at WaterMatters.org/recreation/. The property descriptions included in the recreation guide convey basic information about each property, such as location, access and parking, hours of operation, restroom and water availability, recreational opportunities, and contact numbers. You can also contact the District's Land Use and Protection Section at (352) 796-7211, ext. 4470, or via email at Recreation@WaterMatters.org.

Southwest Florida
Water Management District



CONSERVATION LANDS

Sample List of Natural Communities



Caitlin Elam

Cypress Dome



Land Resources Department

Floodplain Forest



Land Resources Department

Hydric Flatwoods



Brenda Herring

Hydric Hammock



Land Resources Department

Lake



Land Resources Department

Marsh



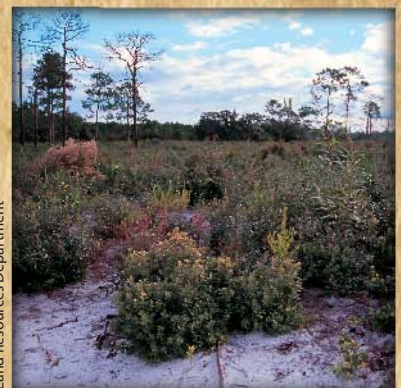
Brenda Herring

Mesic Hammock



Land Resources Department

Mesic Pine Flatwoods



Land Resources Department

Oak Scrub

Sample List of Natural Communities



Land Resources Department

Pasture



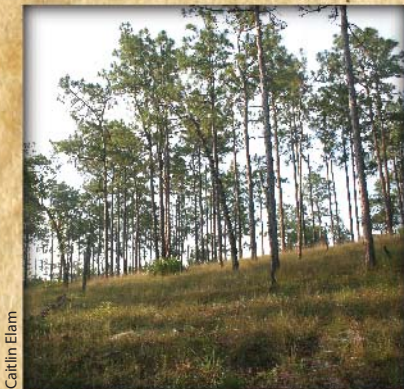
Brenda Hering

Pine Plantation



Land Resources Department

Ruderal



Caitlin Elam

Sandhill



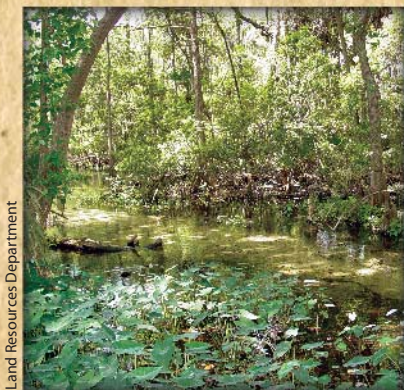
Land Resources Department

Sand Pine Scrub



Land Resources Department

Seepage Slope



Land Resources Department

Spring Run



Land Resources Department

Tidal Marsh



Caitlin Elam

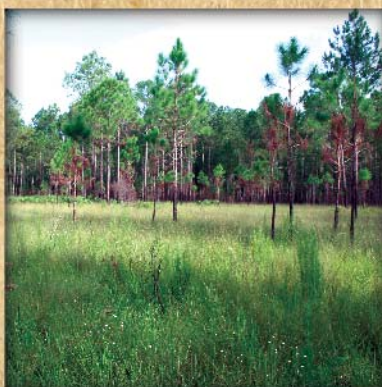
Wet Prairie

Sample List of Natural Communities



Land Resources Department

Xeric Hammock



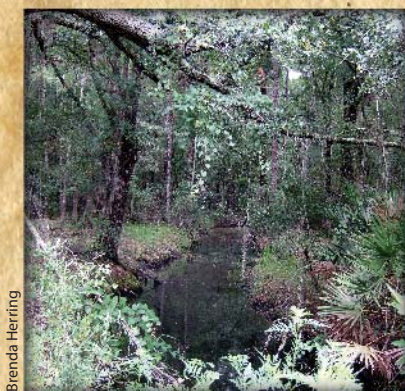
Caitlin Elam

Wet Pine Flatwoods



Brenda Herring

Basin Marsh



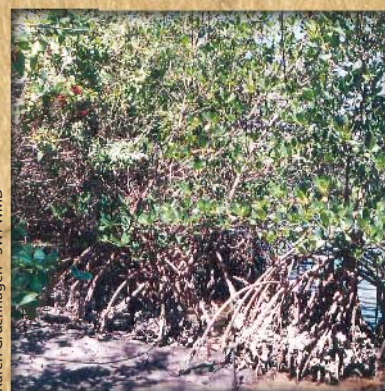
Brenda Herring

Blackwater Stream



Brenda Herring

Depression Marsh



Karen Gruenhagen - SWFWMD

Tidal Swamp